

Applicant**Address****Manufacturer****Address**

The following sample(s) was /were submitted and identified on behalf of the clients as :

Sample Name: mobilephone stabilizer
Model Name: H5, H6, UPDOT, MO6622, WALK CAM, MO6622-03, KB-BT, ZX-G0, NZ-01
Trade Name: N/A
Sample Received Date: August 31, 2023
Testing Period: August 31, 2023- September 6, 2023
Report Date: September 7, 2023
Test Requested: Selected test (s) in the selected parts as requested by client with the RoHS 2.0 Directive (EU) 2015/863 and (EU)2017/2102 amending Annex II to Directive 2011/65/EU on the restriction of hazardous substances.
Test Method Please refer to next page(s).
Test Result Please refer to next page(s).
Test conclusion: Based upon the performed tests by submitted samples, the test results comply with the limits of the RoHS 2.0 Directive (EU) 2015/863 and (EU)2017/2102 amending Annex II to Directive 2011/65/EU.

Signed for and on behalf of

Vivian Jiang
Technical Director

Unless otherwise agreed in writing, this document is issued by the company subject to its general conditions of service printed overleaf, available on request or accessible at <http://www.tmc-lab.com>. Attention is drawn to the limitation of liability, indemnification and jurisdiction issues defined therein. This report shall not be altered, increased or deleted. The results shown in this test report refer only to the sample(s) tested. Without written approval of TMC, this test report shall not be copied except in full and published as advertisement.

1. Pb, Cd, Cr(VI), Hg, PBBs&PBDEs

Test Method:

A. Disassembly, disjointment and mechanical sample preparation

–Ref. to IEC 62321-2:2021, Disassembly, disjointment and mechanical sample preparation.

B. With reference to IEC 62321-1:2013, tests were performed for the samples indicated by the photos in this report.

(1) Screening – Lead, mercury, cadmium, total chromium and total bromine

–Ref. to IEC 62321-3-1:2013, Screening for Lead, mercury, cadmium, total chromium and total bromine by X-ray fluorescence spectrometry.

(2) Wet chemical test method

Test Item(s)	Test Method	Test Equipment	Unit	MDL	Limit
Pb	IEC62321-5:2013	ICP-OES	mg/kg	2	1000
Cd	IEC62321-5:2013	ICP-OES	mg/kg	2	100
Hg	IEC 62321-4:2013 /AMD1:2017	ICP-OES	mg/kg	2	1000
Cr(VI) (Metal)	IEC62321-7-1:2015	UV-Vis	μg/cm ²	0.1	0.13
Cr(VI) (Nonmetal)	IEC62321-7-2:2017	UV-Vis	mg/kg	8	1000
PBBs	IEC62321-6:2015	GC-MS	mg/kg	5	100
PBDEs	IEC62321-6:2015	GC-MS	mg/kg	5	1000

Test result(s):

No.	Sample Description	Results of XRF					Chemical confirmation results (mg/kg)	Conclusion
		Pb	Cd	Hg	Cr	Br		
1	PCB board	BL	27.39	BL	BL	---	---	PASS
2	USB interface metal	BL	BL	BL	BL	---	---	PASS
3	Touch switch	24.61	27.37	BL	BL	13.92	---	PASS
4	Magnet	BL	31.82	BL	BL	---	---	PASS
5	Battery	BL	BL	BL	384.1	---	---	PASS
6	Black plastic case	BL	8.08	BL	2.23	3.28	---	PASS
7	Grey silicone	BL	BL	2.81	23.78	BL	---	PASS
8	Metal bar	2.2	BL	BL	429.41	---	---	PASS
9	Nut	483.84	BL	BL	BL	---	---	PASS
10	Screw	BL	BL	BL	BL	---	---	PASS
11	Chip inductor	BL	2.1	20.55	BL	3.92	---	PASS
12	Copper wire	BL	BL	BL	166.51	---	---	PASS
13	Chip	BL	9.41	BL	BL	11.04	---	PASS
14	Red leather	BL	BL	BL	BL	BL	---	PASS
15	Black leather	BL	BL	BL	BL	BL	---	PASS
16	Soldering tin	BL	BL	BL	BL	---	---	PASS

Remark:

- a. It is the result on total Br while test item on restricted substances is PBBs/PBDEs. It is the result on total Cr while test item on restricted substances is Cr(VI).
- b. The XRF screening test for RoHS elements-The reading may be different to the actual content in the sample be of non-uniformity composition.
- c. Results are obtained by EDXRF for primary screening, and further chemical testing by ICP-OES (for Pb, Cd, Hg), UV-VIS for Cr(VI) and GC/MSD (for PBBs/PBDEs) is recommended to be performed if the concentration exceeds the below warning value according to IEC 62321-3-1:2013.

Attached table 1, XRF screening limits in mg/kg for regulated elements in various matrices:

Element	Polymer Material	Metallic Material	Composite Material
Pb	BL \leq 700-3 σ \leq X< 1300+3 σ \leq OL	BL \leq 700-3 σ \leq X< 1300+3 σ \leq OL	BL \leq 500-3 σ \leq X< 1500+3 σ \leq OL
Cd	BL \leq 70-3 σ \leq X<130+3 σ \leq OL	BL \leq 70-3 σ \leq X<130+3 σ \leq OL	LOD<X<150+3 σ \leq OL
Hg	BL \leq 700-3 σ \leq X< 1300+3 σ \leq OL	BL \leq 700-3 σ \leq X< 1300+3 σ \leq OL	BL \leq 500-3 σ \leq X< 1500+3 σ \leq OL
Cr	BL \leq 700-3 σ <X	BL \leq 700-3 σ <X	BL \leq 500-3 σ <X
Br	BL \leq 300-3 σ <X	--	BL \leq 250-3 σ <X

XRF detection limits in mg/kg for regulated elements in various material

Element	Polymer Material	Metallic Material	Composite Material
Pb	10	50	50
Cd	10	50	50
Hg	10	50	50
Cr	10	50	50
Br	10	50	50

Note:

- BL = Under the XRF screening limit
- OL = Future chemical test will be conducted while result is above the screening limit
- X = inconclusive, the region where need further chemical testing by ICP-OES (for Pb, Cd, Hg), UV-VIS (for Cr(VI)) and GC/MSD (for PBBs, PBDEs).
- 3σ=The reproducibility of analytical instruments
- LOD=Detection limit
- “---” = Not Applicable
- mg/kg=0.0001%
- N.D.=Not Detected(<MDL)
- MDL = Method Detection Limit
- Negative = Absence of Cr(VI), the detected Cr(VI) concentration in the boiling water extraction solution is less than 0.02 mg/kg with 50cm² sample surface area used.
- *=According to 2011/65/EU Annex,point 6-Lead as an alloying element is steel containing up to 0.35% lead by weight, aluminum containing up to 0.4% lead by weight and as a copper alloy, containing up to 4% lead by weight can be exempted.
- ^ = According to the customer's statement, the sample involves EU RoHS Directive 2011/65/EU exemption Article 6(c)-I: The lead content in copper alloys does not exceed 4% by mass.

2. Phthalates—DBP, BBP, DEHP & DIBP

Test Item(s)	Test Method	Test Equipment	Unit	MDL	Limit
Dibutyl Phthalate(DBP)	IEC62321-8:2017	GC-MS	mg/kg	30	1000
Benzylbutyl Phthalate (BBP)	IEC62321-8:2017	GC-MS	mg/kg	30	1000
Di-(2-ethylhexyl) Phthalate(DEHP)	IEC62321-8:2017	GC-MS	mg/kg	30	1000
Diisobutyl phthalate (DIBP)	IEC62321-8:2017	GC-MS	mg/kg	30	1000

Test result(s):

No.	Test item (mg/kg)				Conclusion
	DBP	BBP	DEHP	DIBP	
3	N.D.	N.D.	N.D.	N.D.	PASS
6	N.D.	N.D.	N.D.	N.D.	PASS
7	N.D.	N.D.	N.D.	N.D.	PASS
11	N.D.	N.D.	N.D.	N.D.	PASS
13	N.D.	N.D.	N.D.	N.D.	PASS
14	N.D.	N.D.	N.D.	N.D.	PASS
15	N.D.	N.D.	N.D.	N.D.	PASS

Note:

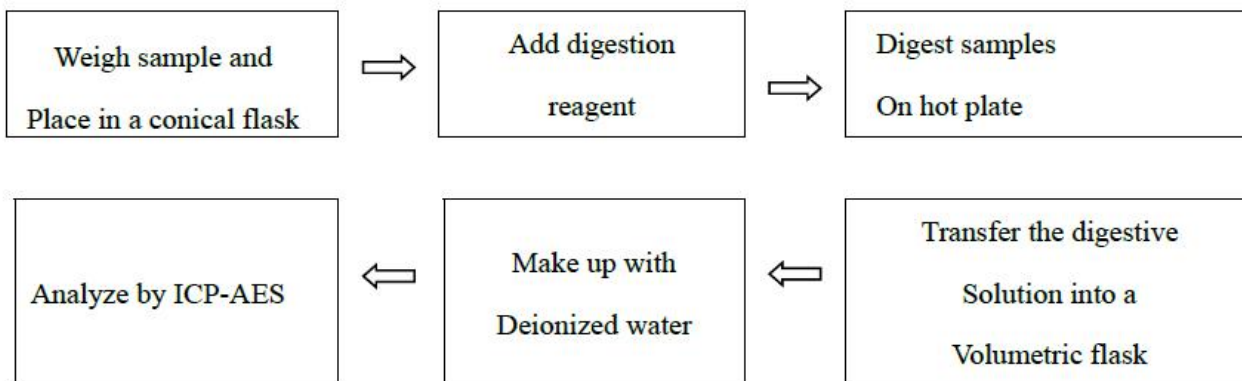
- mg/kg=0.0001%

-ND=Not Detected(<MDL)

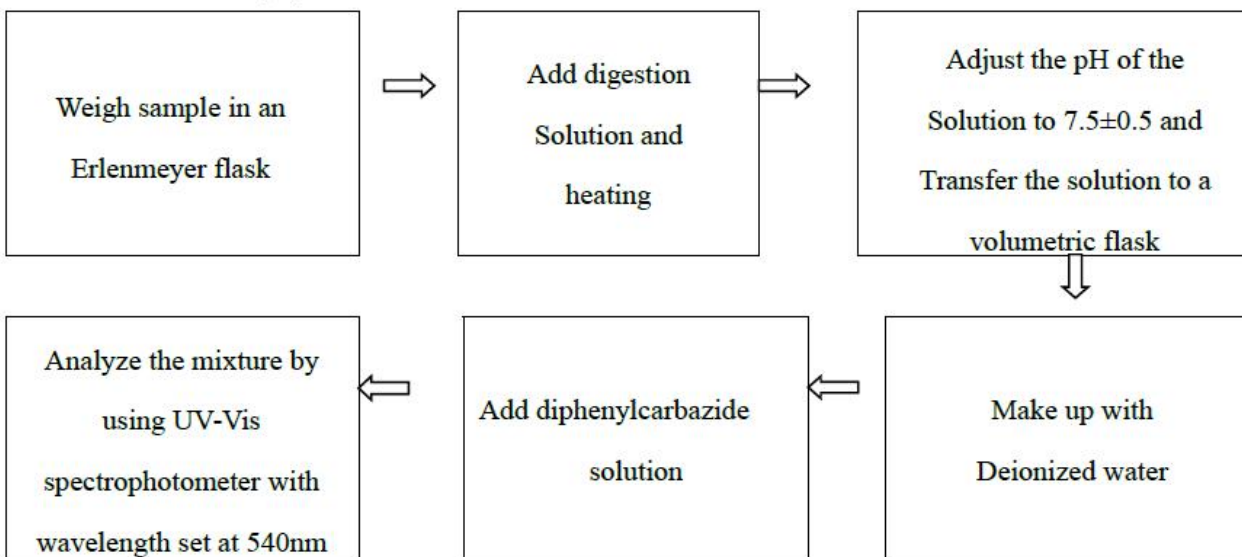
-*1 = The samples were resubmitted on

Test Process:

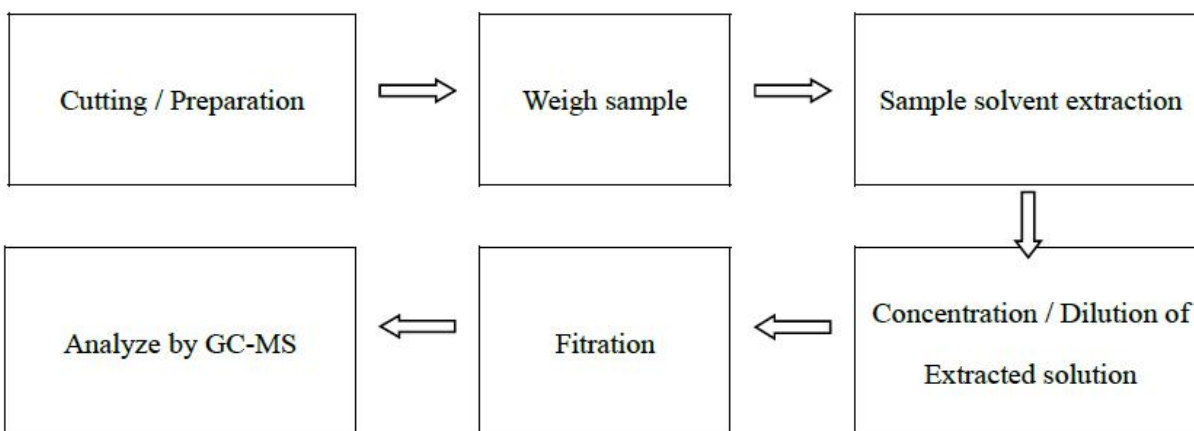
1. Test for Cd/Pb /Hg



2. Test for Chromium (VI) Content



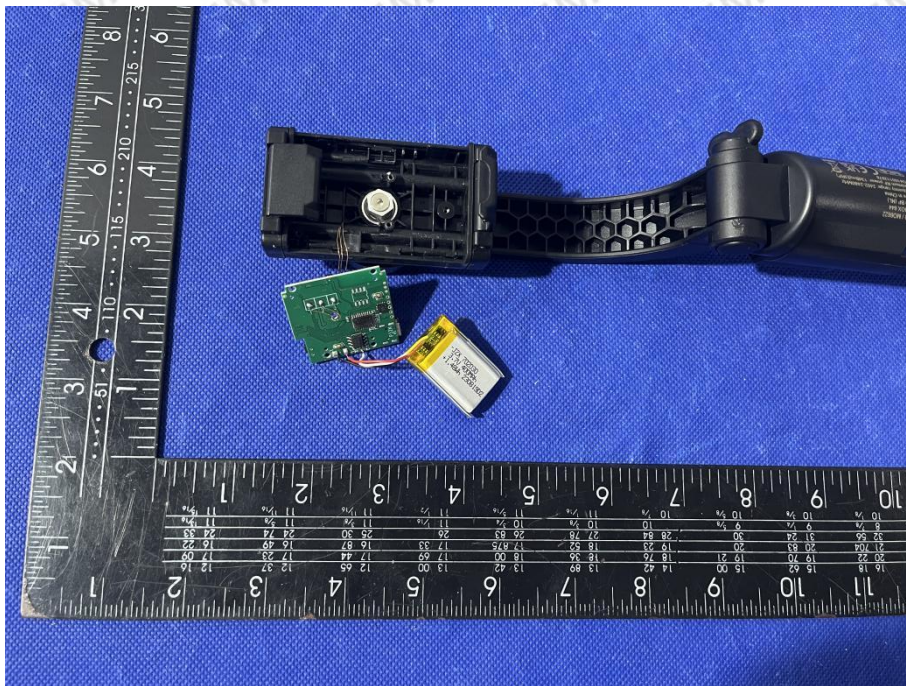
3. Test for PBBs/PBDES/DIBP/DBP/BBP/DEHP Content

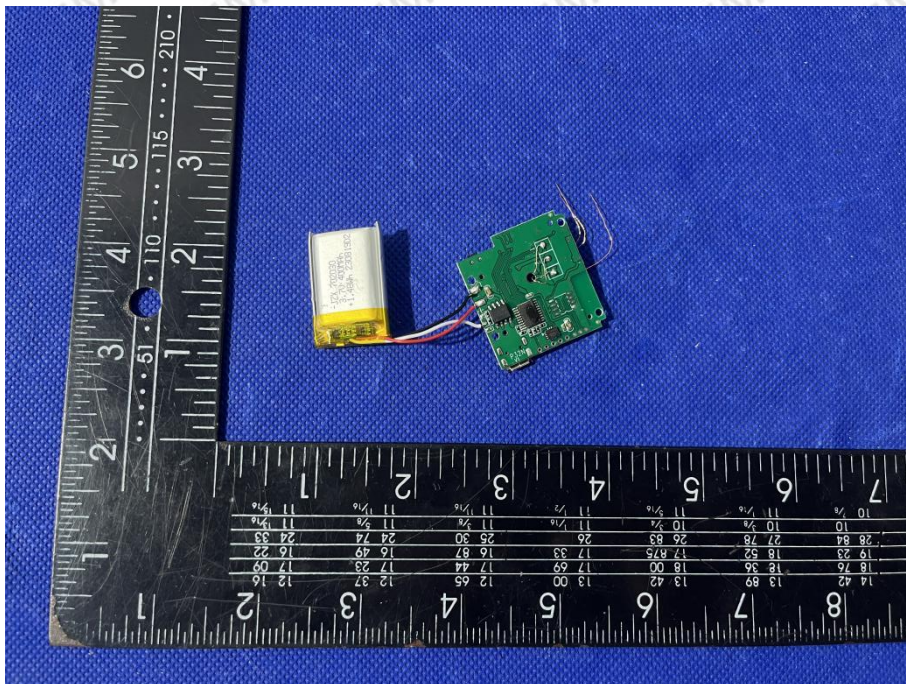
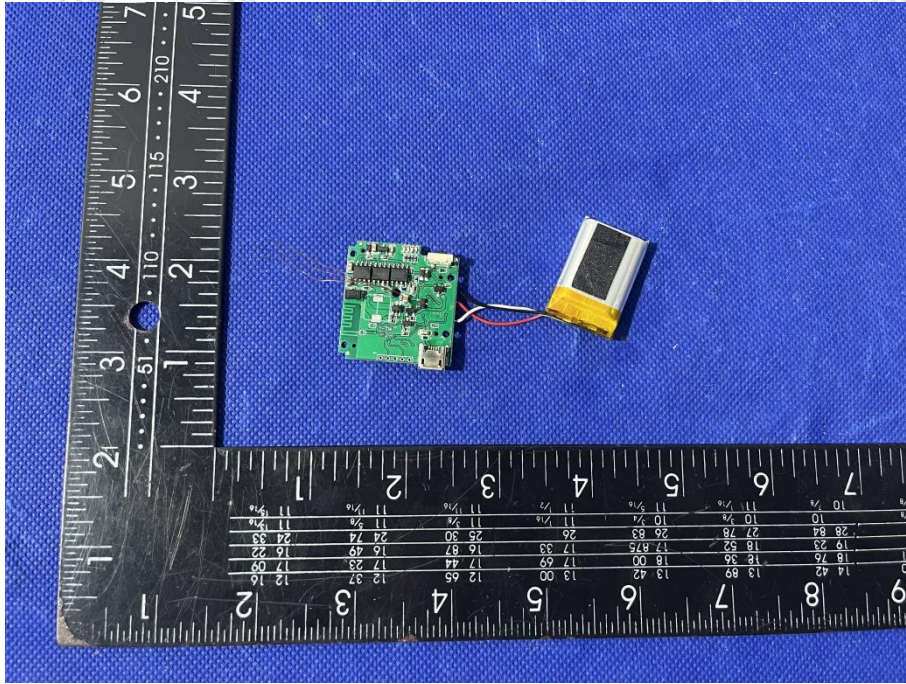


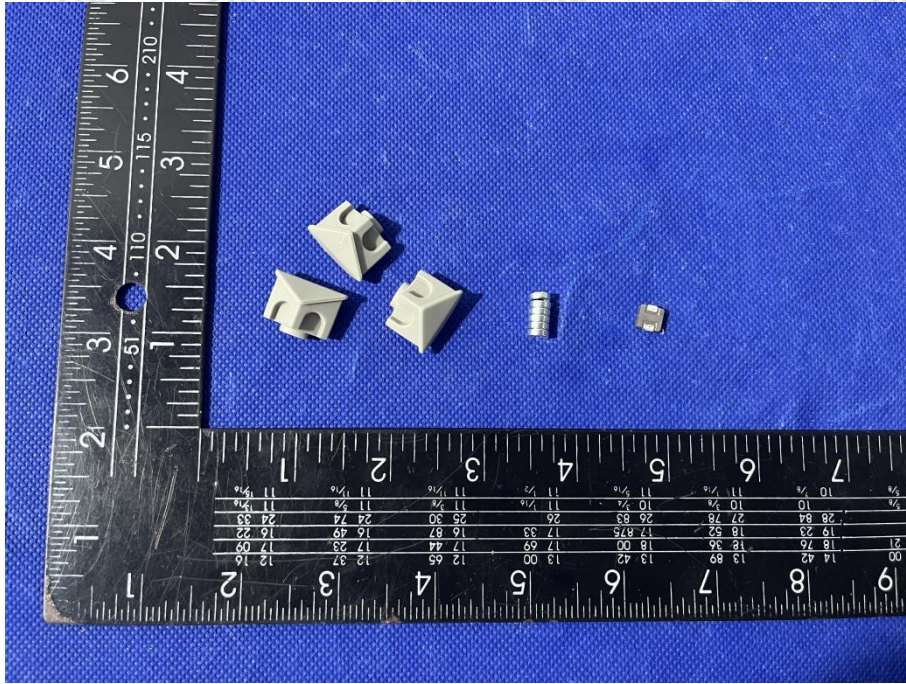
Sample photo:











END OF REPORT