

TEST REPORT

Report No.: **SZ4221021-48483E**

Date: December 14, 2022

Page 1 of 17

Report on the submitted samples said to be:

Sample Description: Massagegun
Tested Style/Item No.: RB-PC-MSG01-B
Additional Style/ Item No.: MG-029, MO6827

Remark: As claimed by the material declaration submitted by the client, the material of Additional Style/ Item No. are the same as the tested Style/ Item No. . But the results only for the tested sample. And the applicant will undertake all differences and risk.

Sample Receiving Date: October 21,2022
Lately Re-submit Date: November 08,2022
Testing Period: October 21,2022 - November 11,2022
Result: **Please refer to next page(s).**

Signed for and on behalf of

BACL

Queenie Lee

Checked by: _____
Queenie Lee

Len Xie

Approved by: _____
Len Xie



TEST REPORT

Report No.: SZ4221021-48483E

Date: December 14, 2022

Page 2 of 17

Summary of Test Result:

TEST REQUEST

CONCLUSION

A RoHS Directive 2011/65/EU and amendment directives (EU) 2015/863 on Lead,Cadmium, Mercury, Hexavalent Chromium, PBBs & PBDEs, Phthalates(DBP, BBP,DEHP, DIBP) content

A.1 XRF screening test

Pass

A.2 Wet Chemical Testing

A.2.1 PBBs & PBDEs content

Pass

A.3 Phthalates(DBP, BBP, DEHP, DIBP)content

Pass

TEST REPORT

Report No.: SZ4221021-48483E

Date: December 14, 2022

Page 3 of 17

A RoHS Directive 2011/65/EU and amendment directives (EU) 2015/863 on Lead, Cadmium, Mercury, Hexavalent Chromium, PBBs & PBDEs, Phthalates (DBP, BBP, DEHP, DIBP) content

A.1 XRF screening test

Test method: IEC 62321-3-1:2013

Seq No.	Tested Part(s)	Result				
		Pb	Cd	Hg	Cr	Br
(1)	Silvery metal(shell, USB plug, USB wire)	BL	BL	BL	BL	---
(2)	White plastic(pin holder, USB plug, USB wire)	BL	BL	BL	BL	BL
(3)	Silvery solder(pin, USB plug, USB wire)	BL	BL	BL	BL	---
(4)	Silvery/golden metal(pin, USB plug, USB wire)	BL	BL	BL	BL	---
(5)	Black PVC(shell, USB plug, USB wire)	BL	BL	BL	BL	BL
(6)	Black PVC(cable jacket, USB wire)	BL	BL	BL	BL	BL
(7)	Red PVC(wire jacket, USB wire)	BL	BL	BL	BL	BL
(8)	Black PVC(wire jacket, USB wire)	BL	BL	BL	BL	BL
(9)	Coppery metal(wire, USB wire)	BL	BL	BL	BL	---
(10)	Silvery metal(shell, Type-C plug, USB wire)	BL	BL	BL	BL	---
(11)	Black PVC(shell, Type-C plug, USB wire)	BL	BL	BL	BL	BL
(12)	Dark grey plastic(pin holder, Type-C plug, USB wire)	BL	BL	BL	BL	BL
(13)	Golden metal(pin, Type-C plug, USB wire)	BL	BL	BL	BL	---
(14)	Silvery metal(clip, Type-C plug, USB wire)	BL	BL	BL	BL	---
(15)	Silvery solder(PCB, Type-C plug, USB wire)	BL	BL	BL	BL	---
(16)	Black body(SMD resistor, PCB, Type-C plug, USB wire)	BL	BL	BL	BL	BL
(17)*	Green coated beige plastic with coppery metal(PCB, Type-C plug, USB wire)	BL	BL	BL	BL	X
(18)*	Black plastic(head, Massagegun)	BL	BL	BL	BL	X
(19)	Black soft plastic(head, Massagegun)	BL	BL	BL	BL	BL
(20)	Black foam(head, Massagegun)	BL	BL	BL	BL	BL
(21)*	Silvery plated black plastic(handle cover, Massagegun)	BL	BL	BL	BL	X
(22)*	Silvery plated beige plastic(bright bar, Massagegun)	BL	BL	BL	BL	X
(23)*	Black plastic(shell, Massagegun)	BL	BL	BL	BL	X
(24)	Black plastic(front ring, Massagegun)	BL	BL	BL	BL	BL
(25)	Black soft plastic(front ring, Massagegun)	BL	BL	BL	BL	BL
(26)	White plastic(front ring, Massagegun)	BL	BL	BL	BL	BL
(27)	White oil(font ring, Massagegun)	BL	BL	BL	BL	BL

TEST REPORT

Report No.: SZ4221021-48483E

Date: December 14, 2022

Page 4 of 17

Seq No.	Tested Part(s)	Result				
		Pb	Cd	Hg	Cr	Br
(28)	Silvery metal(screw, shell, Massagegun)	BL	BL	BL	BL	---
(29)*	Black coated beige plastic(back cover, Massagegun)	BL	BL	BL	BL	X
(30)	Black soft plastic(button, back cover, Massagegun)	BL	BL	BL	BL	BL
(31)	Silvery metal(screw, PCB holder, Massagegun)	BL	BL	BL	BL	---
(32)	Silvery metal(shell, type-C socket, main PCB, Massagegun)	BL	BL	BL	BL	---
(33)	Silvery/golden metal(pin, type-C socket, main PCB, Massagegun)	BL	BL	BL	BL	---
(34)	Dark grey plastic(pin holder, type-C socket, main PCB, Massagegun)	BL	BL	BL	BL	BL
(35)*	Black plastic(button, switch, main PCB, Massagegun)	BL	BL	BL	BL	X
(36)	Black plastic(shell, switch, main PCB, Massagegun)	BL	BL	BL	BL	BL
(37)	Silvery metal(shell, switch, main PCB, Massagegun)	BL	BL	BL	BL	---
(38)	Silvery metal(sheet, switch, main PCB, Massagegun)	BL	BL	BL	BL	---
(39)	Silvery metal(pin, switch, main PCB, Massagegun)	BL	BL	BL	BL	---
(40)	Black body(IC, main PCB, Massagegun)	BL	BL	BL	BL	BL
(41)	Black body(SMD triode, main PCB, Massagegun)	BL	BL	BL	BL	BL
(42)	Black body(SMD diode, main PCB, Massagegun)	BL	BL	BL	BL	BL
(43)	Brown body(SMD capacitor, main PCB, Massagegun)	BL	BL	BL	BL	BL
(44)	Black body(SMD resistor, main PCB, Massagegun)	BL	BL	BL	BL	BL
(45)	Black body(SMD inductor, main PCB, Massagegun)	BL	BL	BL	BL	BL
(46)	Grey body(inductor, main PCB, Massagegun)	BL	BL	BL	BL	BL
(47)	Beige body(LED, main PCB, Massagegun)	BL	BL	BL	BL	BL
(48)	Black body(SMD resistor "R14", main PCB, Massagegun)	BL	BL	BL	BL	BL
(49)	Black body(fuse, main PCB, Massagegun)	BL	BL	BL	BL	BL
(50)	White plastic(socket, main PCB, Massagegun)	BL	BL	BL	BL	BL
(51)	Silvery metal(pin, socket, main PCB, Massagegun)	BL	BL	BL	BL	---
(52)	Silvery solder(main PCB, Massagegun)	BL	BL	BL	BL	---
(53)*	White printed green coated beige plastic with coppery metal(main PCB, Massagegun)	BL	BL	BL	BL	X
(54)	Grey metal(head connect, Massagegun)	BL	BL	BL	BL	---
(55)	Silvery metal(screw, head connect, Massagegun)	BL	BL	BL	BL	---
(56)	Silvery metal(screw, curved rod, Massagegun)	BL	BL	BL	BL	---
(57)	Beige grey plastic(curved rod, Massagegun)	BL	BL	BL	BL	BL

TEST REPORT

Report No.: SZ4221021-48483E

Date: December 14, 2022

Page 5 of 17

Seq No.	Tested Part(s)	Result				
		Pb	Cd	Hg	Cr	Br
(58)	Silvery metal(out ring, small bearing, Massagegun)	BL	BL	BL	BL	---
(59)	Silvery metal(inner ring, small bearing, Massagegun)	BL	BL	BL	BL	---
(60)	Silvery metal(cover, small bearing, Massagegun)	BL	BL	BL	BL	---
(61)	Silvery metal(beads, small bearing, Massagegun)	BL	BL	BL	BL	---
(62)	Brown plastic(beads holder, small bearing, Massagegun)	BL	BL	BL	BL	BL
(63)	Transparent oil(beads oil, small bearing, Massagegun)	BL	BL	BL	BL	BL
(64)	Silvery metal(out ring, big bearing, Massagegun)	BL	BL	BL	BL	---
(65)	Silvery metal(inner ring, big bearing, Massagegun)	BL	BL	BL	BL	---
(66)	Silvery metal(cover, big bearing, Massagegun)	BL	BL	BL	BL	---
(67)	Silvery metal(beads, big bearing, Massagegun)	BL	BL	BL	BL	---
(68)	Brown plastic(beads holder, big bearing, Massagegun)	BL	BL	BL	BL	BL
(69)	Transparent oil(beads oil, big bearing, Massagegun)	BL	BL	BL	BL	BL
(70)	Silvery metal(screw, curved rod connect, Massagegun)	BL	BL	BL	BL	---
(71)	Silvery metal(screw, motor holder, Massagegun)	BL	BL	BL	BL	---
(72)	White plastic(plug, motor wire, Massagegun)	BL	BL	BL	BL	BL
(73)	Silvery metal(pin, plug, motor wire, Massagegun)	BL	BL	BL	BL	---
(74)	Black PVC(wire jacket, motor wire, Massagegun)	BL	BL	BL	BL	BL
(75)	Purple PVC(wire jacket, motor wire, Massagegun)	BL	BL	BL	BL	BL
(76)	Silvery metal(wire, motor holder, Massagegun)	BL	BL	BL	BL	---
(77)	Silvery solder(pin, motor, Massagegun)	BL	BL	BL	BL	---
(78)	Golden metal(pin, motor, Massagegun)	BL	BL	BL	BL	---
(79)	Multi-color plated silvery metal(cover, motor, Massagegun)	BL	BL	BL	BL	---
(80)	Grey metal(bearing, cover, motor, Massagegun)	BL	BL	BL	BL	---
(81)	Silvery metal(rivet, cover, motor, Massagegun)	BL	BL	BL	BL	---
(82)	Beige plastic(cover, motor, Massagegun)	BL	BL	BL	BL	BL
(83)	Coppery metal(brush, cover, motor, Massagegun)	BL	BL	BL	BL	---
(84)	Black soft plastic with adhesive(brush, cover, motor, Massagegun)	BL	BL	BL	BL	BL
(85)	Black solid(carbon brush, cover, motor, Massagegun)	BL	BL	BL	BL	BL
(86)	Silvery metal(bearing holder, cover, motor, Massagegun)	BL	BL	BL	BL	---
(87)	Multi-color plated silvery metal(shell, motor, Massagegun)	BL	BL	BL	BL	---
(88)	Black magnet(motor, Massagegun)	BL	BL	BL	BL	BL

TEST REPORT

Report No.: SZ4221021-48483E

Date: December 14, 2022

Page 6 of 17

Seq No.	Tested Part(s)	Result				
		Pb	Cd	Hg	Cr	Br
(89)	Grey metal(clip, motor, Massagegun)	BL	BL	BL	BL	---
(90)	Silvery metal(axis, rotor, motor, Massagegun)	BL	BL	BL	BL	---
(91)	Coppery metal(plate, rotor, motor, Massagegun)	BL	BL	BL	BL	---
(92)	Black plastic(plate holder, rotor, motor, Massagegun)	BL	BL	BL	BL	BL
(93)	Coppery enameled wire(coil, rotor, motor, Massagegun)	BL	BL	BL	BL	BL
(94)	Beige grey plastic(coil holder, rotor, motor, Massagegun)	BL	BL	BL	BL	BL
(95)	Silvery metal(silicon steel sheets, rotor, motor, Massagegun)	BL	BL	BL	BL	---
(96)	Silvery metal(out ring, rotor, motor, Massagegun)	BL	BL	BL	BL	---
(97)	Silvery metal(inner ring, rotor, motor, Massagegun)	BL	BL	BL	BL	---
(98)	Silvery metal(cover, rotor, motor, Massagegun)	BL	BL	BL	BL	---
(99)	Silvery metal(beads, rotor, motor, Massagegun)	BL	BL	BL	BL	---
(100)	Brown plastic(beads holder, rotor, motor, Massagegun)	BL	BL	BL	BL	BL
(101)	Transparent oil(beads oil, rotor, motor, Massagegun)	BL	BL	BL	BL	BL
(102)	Black printed kelly PVC(battery, Massagegun)	BL	BL	BL	BL	BL
(103)	Black foam with adhesive(pad, battery, Massagegun)	BL	BL	BL	BL	BL
(104)	Black body(inductor, battery, Massagegun)	BL	BL	BL	BL	BL
(105)	Black PVC(wire jacket, inductor, battery, Massagegun)	BL	BL	BL	BL	BL
(106)	Coppery metal(wire, inductor, battery, Massagegun)	BL	BL	BL	BL	---
(107)	Black PVC(wire jacket, battery, Massagegun)	BL	BL	BL	BL	BL
(108)	Red PVC(wire jacket, battery, Massagegun)	BL	BL	BL	BL	BL
(109)	Silvery metal(wire, battery, Massagegun)	BL	BL	BL	BL	---
(110)	Black soft plastic(pin sleeve, battery, Massagegun)	BL	BL	BL	BL	BL
(111)	Silvery metal(pin, battery, Massagegun)	BL	BL	BL	BL	---
(112)	Green paper with adhesive(tape, battery, Massagegun)	BL	BL	BL	BL	BL
(113)	Silvery solder(PCB, battery, Massagegun)	BL	BL	BL	BL	---
(114)*	White printed green coated beige plastic with coppery metal(PCB, battery, Massagegun)	BL	BL	BL	BL	X
(115)	Black body(IC, PCB, battery, Massagegun)	BL	BL	BL	BL	BL
(116)	Black body(SMD resistor, PCB, battery, Massagegun)	BL	BL	BL	BL	BL
(117)	Brown body(SMD capacitor, PCB, battery, Massagegun)	BL	BL	BL	BL	BL

TEST REPORT

Report No.: **SZ4221021-48483E**

Date: December 14, 2022

Page 7 of 17

Note:

--- = Not Applicable.

* = Screening by XRF and detected by chemical method. The test result of chemical method please refer to next pages.

Remark:

i Result were obtained by XRF for primary screening, and further chemical testing by ICP (for Cd, Pb, Hg), UV-Vis (for Cr(VI)) and GC-MS (for PBBs, PBDEs) are recommended to be performed, if the concentration exceeds the below warning value according to IEC62321-3-1:2013.

Element	Unit	Polymers	Metal	Composite Material
Cd	mg/kg	BL≤70-3σ<X <130+3σ≤OL	BL≤70-3σ<X <130+3σ≤OL	BL≤50-3σ<X <150+3σ≤OL
Pb	mg/kg	BL≤700-3σ<X <1300+3σ≤OL	BL≤700-3σ<X <1300+3σ≤OL	BL≤500-3σ<X <1500+3σ≤OL
Hg	mg/kg	BL≤700-3σ<X <1300+3σ≤OL	BL≤700-3σ<X <1300+3σ≤OL	BL≤500-3σ<X <1500+3σ≤OL
Cr	mg/kg	BL≤700-3σ<X	BL≤700-3σ<X	BL≤500-3σ<X
Br	mg/kg	BL≤300-3σ<X	--	BL≤250-3σ<X

Note:

BL = Below Limit

OL = Over Limit

IN / X = Inconclusive (questionable, need further chemical analysis)

ii The XRF screening test for RoHS elements – The reading may be different to the actual content in the sample be of non-uniformity composition.

iii The maximum permissible limit is quoted from the RoHS directive 2011/65/EU:

RoHS Restricted Substances	Maximum Concentration Value (mg/kg) (by weight in homogenous materials)
Cadmium (Cd)	100
Lead (Pb)	1000
Mercury (Hg)	1000
Hexavalent Chromium (Cr(VI))	1000
Polybrominated biphenyls (PBBs)	1000
Polybrominated diphenylethers (PBDEs)	1000

Disclaimers:

This XRF Screening report is for reference purposes only. The applicant shall make its/his/her own judgment as to whether the information provided in this XRF screening report is sufficient for its/his/her purposes.

The result shown in this XRF screening report will differ based on various factors, including but not limited to, the sample size, thickness, area, surface flatness, equipment parameters and matrix effect (e.g. plastic, rubber, metal, glass, ceramic etc.). Further wet chemical pre-treatment with relevant chemical equipment analysis are required to obtain quantitative data.

TEST REPORT

Report No.: SZ4221021-48483E

Date: December 14, 2022

Page 8 of 17

A.2 Wet Chemical Testing

A.2.1 PBBs & PBDEs content

Test method: IEC 62321-6:2015

Item	Unit	MDL	Result					Limit
			(17)	(18)	(21)	(22)	(23)	
Monobromobiphenyl (MonoBB)	mg/kg	50	N.D.	N.D.	N.D.	N.D.	N.D.	-
Dibromobiphenyl(DiBB)	mg/kg	50	N.D.	N.D.	N.D.	N.D.	N.D.	-
Tribromobiphenyl(TriBB)	mg/kg	50	N.D.	N.D.	N.D.	N.D.	N.D.	-
Tetrabromobiphenyl(TetraBB)	mg/kg	50	N.D.	N.D.	N.D.	N.D.	N.D.	-
Pentabromobiphenyl(PentaBB)	mg/kg	50	N.D.	N.D.	N.D.	N.D.	N.D.	-
Hexabromobiphenyl(HexaBB)	mg/kg	50	N.D.	N.D.	N.D.	N.D.	N.D.	-
Heptabromobiphenyl (HeptaBB)	mg/kg	50	N.D.	N.D.	N.D.	N.D.	N.D.	-
Octabromobiphenyl(OctaBB)	mg/kg	50	N.D.	N.D.	N.D.	N.D.	N.D.	-
Nonabromobiphenyl(NonaBB)	mg/kg	50	N.D.	N.D.	N.D.	N.D.	N.D.	-
Decabromobiphenyl(DecaBB)	mg/kg	50	N.D.	N.D.	N.D.	N.D.	N.D.	-
Monobromodiphenyl ether (MonoBDE)	mg/kg	50	N.D.	N.D.	N.D.	N.D.	N.D.	-
Dibromodiphenyl ether (DiBDE)	mg/kg	50	N.D.	N.D.	N.D.	N.D.	N.D.	-
Tribromodiphenyl ether (TriBDE)	mg/kg	50	N.D.	N.D.	N.D.	N.D.	N.D.	-
Tetrabromodiphenyl ether (TetraBDE)	mg/kg	50	N.D.	N.D.	N.D.	N.D.	N.D.	-
Pentabromodiphenyl ether (PentaBDE)	mg/kg	50	N.D.	N.D.	N.D.	N.D.	N.D.	-
Hexabromodiphenyl ether (HexaBDE)	mg/kg	50	N.D.	N.D.	N.D.	N.D.	N.D.	-
Heptabromodiphenyl ether (HeptaBDE)	mg/kg	50	N.D.	N.D.	N.D.	N.D.	N.D.	-
Octabromodiphenyl ether (OctaBDE)	mg/kg	50	N.D.	N.D.	N.D.	N.D.	N.D.	-
Nonabromodiphenyl ether (NonaBDE)	mg/kg	50	N.D.	N.D.	N.D.	N.D.	N.D.	-
Decabromodiphenyl ether (DecaBDE)	mg/kg	50	N.D.	58	100	58	72	-

TEST REPORT

Report No.: SZ4221021-48483E

Date: December 14, 2022

Page 9 of 17

Item	Unit	MDL	Result					Limit
			(17)	(18)	(21)	(22)	(23)	
sum of MonoBDE,DiBDE,TriBDE,TetraBDE,PentaBDE,HexaBDE,HeptaBDE,OctaBDE,NonaBDE,DecaBDE	mg/kg	-	/	58	100	58	72	1000
sum of MonoBB,DiBB,TriBB,TetraBB,PentaBB,HexaBB,HeptaBB,OctaBB,NonaBB,DecaBB	mg/kg	-	/	/	/	/	/	1000
Conclusion	/	/	Pass	Pass	Pass	Pass	Pass	/

Item	Unit	MDL	Result				Limit
			(29)	(35)	(53)	(114)	
Monobromobiphenyl (MonoBB)	mg/kg	50	N.D.	N.D.	N.D.	N.D.	-
Dibromobiphenyl(DiBB)	mg/kg	50	N.D.	N.D.	N.D.	N.D.	-
Tribromobiphenyl(TriBB)	mg/kg	50	N.D.	N.D.	N.D.	N.D.	-
Tetrabromobiphenyl(TetraBB)	mg/kg	50	N.D.	N.D.	N.D.	N.D.	-
Pentabromobiphenyl(PentaBB)	mg/kg	50	N.D.	N.D.	N.D.	N.D.	-
Hexabromobiphenyl(HexaBB)	mg/kg	50	N.D.	N.D.	N.D.	N.D.	-
Heptabromobiphenyl (HeptaBB)	mg/kg	50	N.D.	N.D.	N.D.	N.D.	-
Octabromobiphenyl(OctaBB)	mg/kg	50	N.D.	N.D.	N.D.	N.D.	-
Nonabromobiphenyl(NonaBB)	mg/kg	50	N.D.	N.D.	N.D.	N.D.	-
Decabromobiphenyl(DecaBB)	mg/kg	50	N.D.	N.D.	N.D.	N.D.	-
Monobromodiphenyl ether (MonoBDE)	mg/kg	50	N.D.	N.D.	N.D.	N.D.	-
Dibromodiphenyl ether (DiBDE)	mg/kg	50	N.D.	N.D.	N.D.	N.D.	-
Tribromodiphenyl ether (TriBDE)	mg/kg	50	N.D.	N.D.	N.D.	N.D.	-
Tetrabromodiphenyl ether (TetraBDE)	mg/kg	50	N.D.	N.D.	N.D.	N.D.	-
Pentabromodiphenyl ether (PentaBDE)	mg/kg	50	N.D.	N.D.	N.D.	N.D.	-
Hexabromodiphenyl ether (HexaBDE)	mg/kg	50	N.D.	N.D.	N.D.	N.D.	-
Heptabromodiphenyl ether (HeptaBDE)	mg/kg	50	N.D.	N.D.	N.D.	N.D.	-

TEST REPORT

Report No.: SZ4221021-48483E

Date: December 14, 2022

Page 10 of 17

Item	Unit	MDL	Result				Limit
			(29)	(35)	(53)	(114)	
Octabromodiphenyl ether (OctaBDE)	mg/kg	50	N.D.	N.D.	N.D.	N.D.	-
Nonabromodiphenyl ether (NonaBDE)	mg/kg	50	N.D.	N.D.	N.D.	N.D.	-
Decabromodiphenyl ether (DecaBDE)	mg/kg	50	N.D.	N.D.	N.D.	N.D.	-
sum of MonoBB,DiBB, TriBB, TetraBB, PentaBB, HexaBB, HeptaBB, OctaBB, NonaBB, DecaBB	mg/kg	-	/	/	/	/	1000
sum of MonoBDE, DiBDE, TriBDE, TetraBDE, PentaBDE, HexaBDE, HeptaBDE, OctaBDE, NonaBDE, DecaBDE	mg/kg	-	/	/	/	/	1000
Conclusion	/	/	Pass	Pass	Pass	Pass	/

A.3 Phthalates(DBP, BBP, DEHP, DIBP)content

Test method: IEC 62321-8:2017

Item	Unit	MDL	Result						Limit
			(2)+(12)+(26)	(5)	(6)	(7)	(8)	(11)	
Dibutyl Phthalate(DBP)	mg/kg	30	N.D.	N.D.	74	86	77	N.D.	1000
Benzyl Butyl Phthalate(BBP)	mg/kg	30	N.D.	N.D.	N.D.	N.D.	N.D.	N.D.	1000
Bis-(2-ethylhexyl) Phthalate (DEHP)	mg/kg	30	N.D.	N.D.	N.D.	N.D.	N.D.	N.D.	1000
Diisobutyl phthalate(DIBP)	mg/kg	30	N.D.	N.D.	N.D.	N.D.	N.D.	N.D.	1000
Conclusion	/	/	Pass	Pass	Pass	Pass	Pass	Pass	/

Item	Unit	MDL	Result						Limit
			(17)+(104)+(115)	(18)+(21)+(22)	(19)+(20)+(30)	(23)+(24)+(29)	(25)	(27)+(63)+(69)	
Dibutyl Phthalate(DBP)	mg/kg	30	N.D.	N.D.	N.D.	N.D.	N.D.	N.D.	1000
Benzyl Butyl Phthalate(BBP)	mg/kg	30	N.D.	N.D.	N.D.	N.D.	N.D.	N.D.	1000
Bis-(2-ethylhexyl) Phthalate (DEHP)	mg/kg	30	N.D.	63	N.D.	62	N.D.	N.D.	1000
Diisobutyl phthalate(DIBP)	mg/kg	30	N.D.	N.D.	N.D.	N.D.	N.D.	N.D.	1000
Conclusion	/	/	Pass	Pass	Pass	Pass	Pass	Pass	/

TEST REPORT

Report No.: SZ4221021-48483E

Date: December 14, 2022

Page 11 of 17

Item	Unit	MDL	Result						Limit
			(34)+(35)+(36)	(40)+(41)+(42)	(46)+(47)+(49)	(50)+(62)+(68)	(53)+(114)	(57)+(82)+(94)	
Dibutyl Phthalate(DBP)	mg/kg	30	N.D.	N.D.	N.D.	N.D.	N.D.	N.D.	1000
Benzyl Butyl Phthalate(BBP)	mg/kg	30	N.D.	N.D.	N.D.	N.D.	N.D.	N.D.	1000
Bis-(2-ethylhexyl) Phthalate (DEHP)	mg/kg	30	N.D.	N.D.	N.D.	N.D.	N.D.	N.D.	1000
Diisobutyl phthalate(DIBP)	mg/kg	30	N.D.	N.D.	N.D.	N.D.	N.D.	N.D.	1000
Conclusion	/	/	Pass	Pass	Pass	Pass	Pass	Pass	/

Item	Unit	MDL	Result					Limit
			(72)+(92)+(93)	(74)	(75)	(84)	(100)+(101)+(110)	
Dibutyl Phthalate(DBP)	mg/kg	30	N.D.	40	50	N.D.	N.D.	1000
Benzyl Butyl Phthalate(BBP)	mg/kg	30	N.D.	N.D.	N.D.	N.D.	N.D.	1000
Bis-(2-ethylhexyl) Phthalate (DEHP)	mg/kg	30	N.D.	N.D.	32	89	N.D.	1000
Diisobutyl phthalate(DIBP)	mg/kg	30	N.D.	N.D.	N.D.	N.D.	N.D.	1000
Conclusion	/	/	Pass	Pass	Pass	Pass	Pass	/

Item	Unit	MDL	Result					Limit
			(102)	(103)+(112)	(105)	(107)	(108)	
Dibutyl Phthalate(DBP)	mg/kg	30	N.D.	N.D.	N.D.	254	476	1000
Benzyl Butyl Phthalate(BBP)	mg/kg	30	N.D.	N.D.	N.D.	N.D.	N.D.	1000
Bis-(2-ethylhexyl) Phthalate (DEHP)	mg/kg	30	N.D.	61	78	134	110	1000
Diisobutyl phthalate(DIBP)	mg/kg	30	N.D.	N.D.	N.D.	N.D.	N.D.	1000
Conclusion	/	/	Pass	Pass	Pass	Pass	Pass	/

Note:

- N.D.= Not Detected or less than MDL

- MDL = Method Detection Limit

- "+" = Composite testing.

-The Result less than MDL are not taken into account while calculating the sum contents.

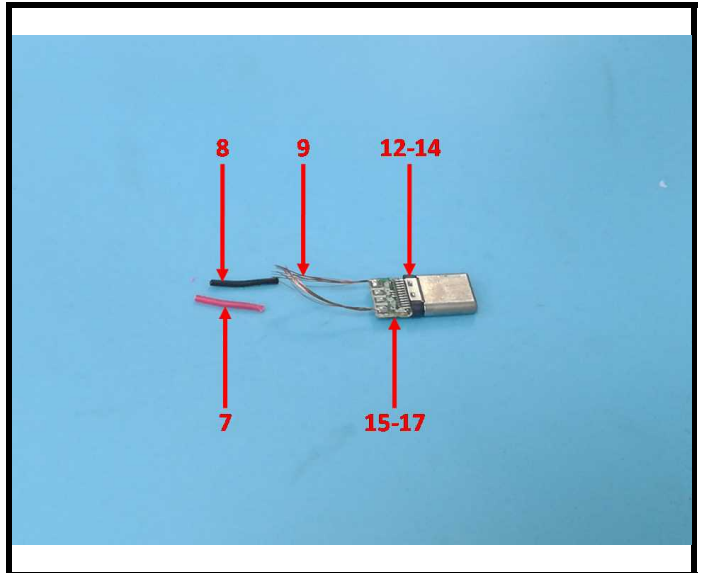
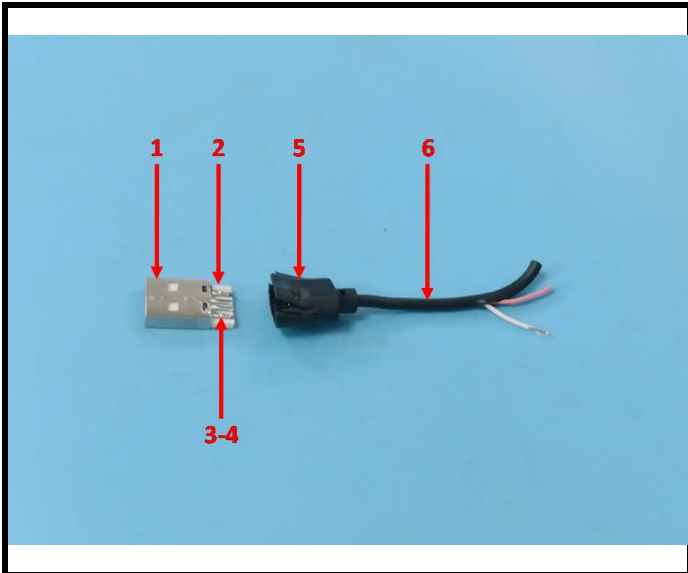
TEST REPORT

Report No.: SZ4221021-48483E

Date: December 14, 2022

Page 12 of 17

Photograph of Sample

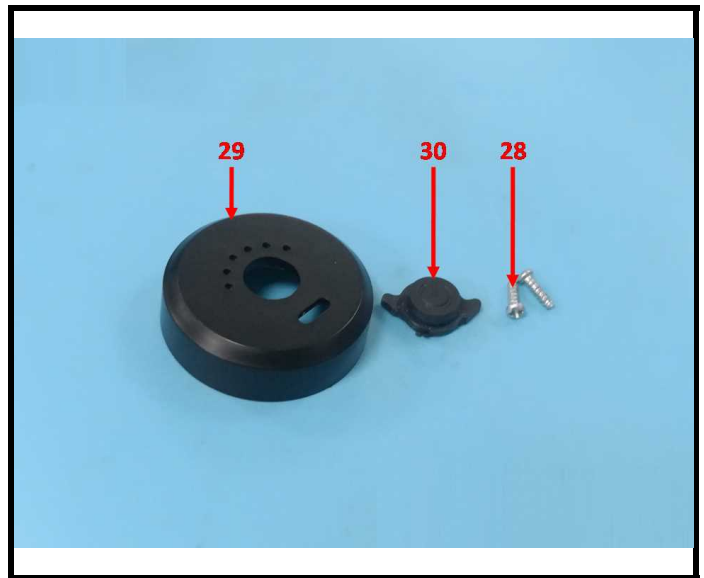
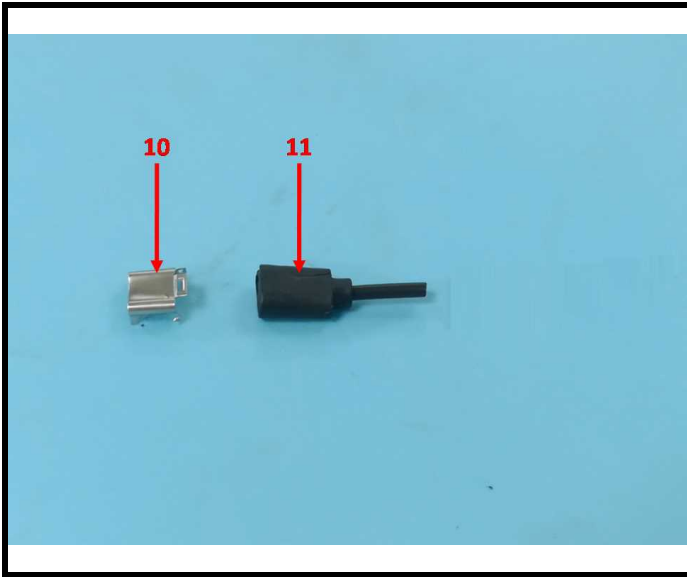


TEST REPORT

Report No.: SZ4221021-48483E

Date: December 14, 2022

Page 13 of 17

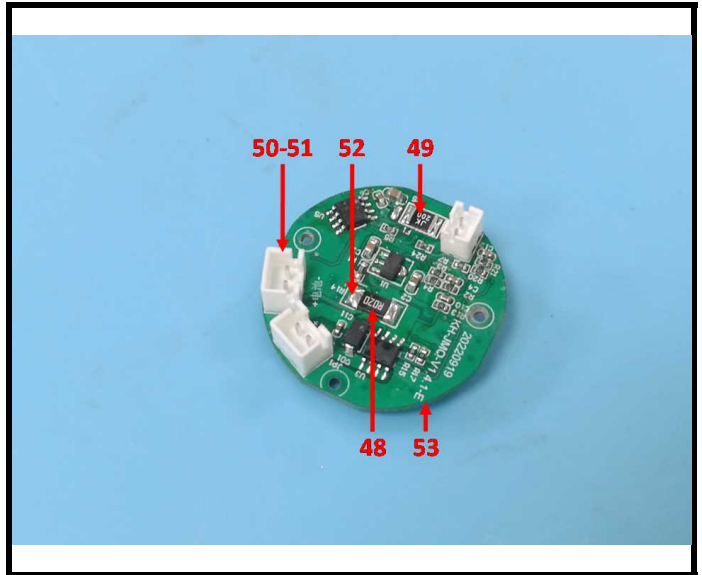
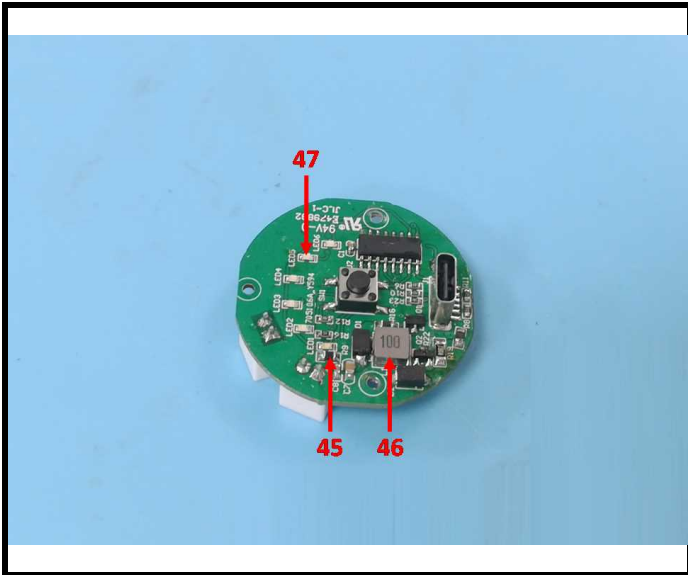
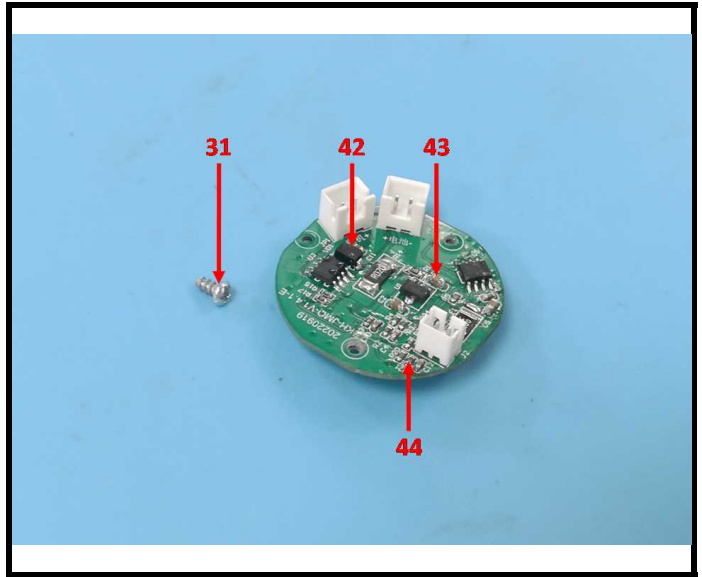
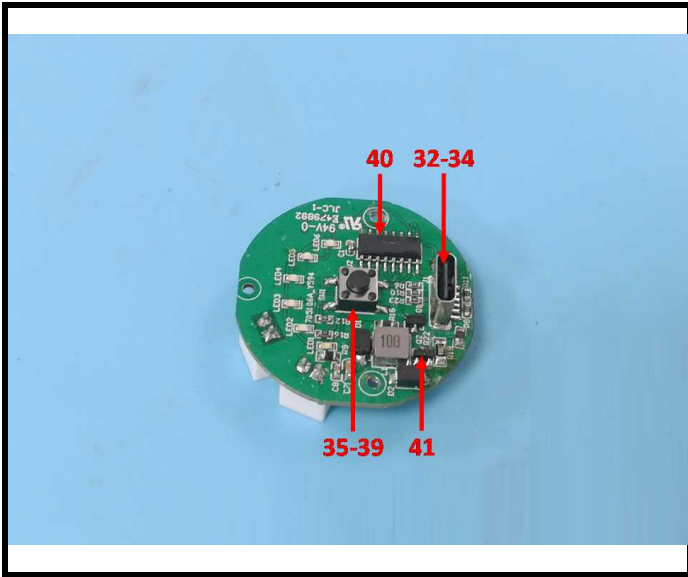


TEST REPORT

Report No.: SZ4221021-48483E

Date: December 14, 2022

Page 14 of 17

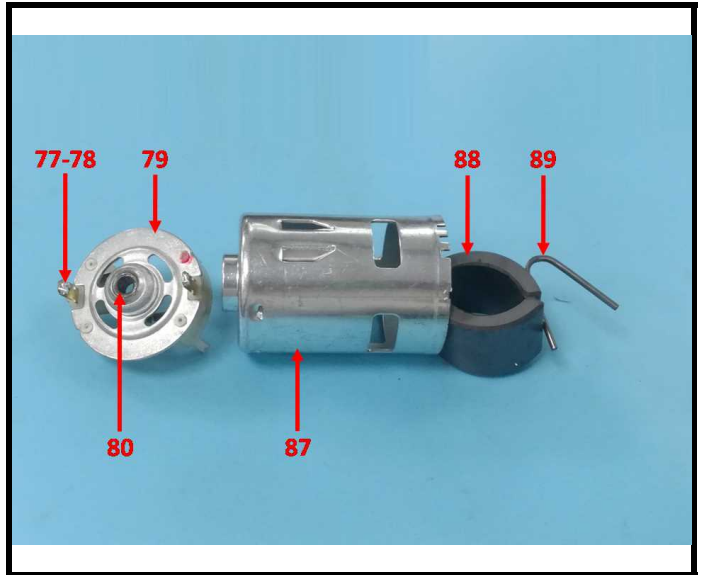
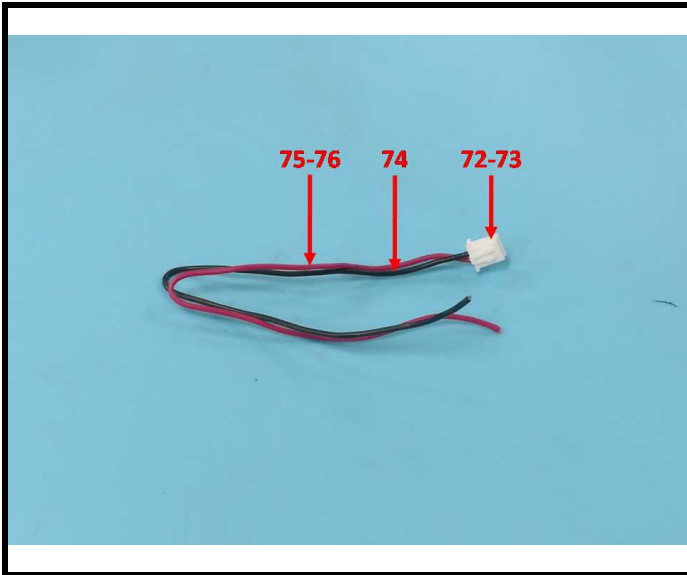
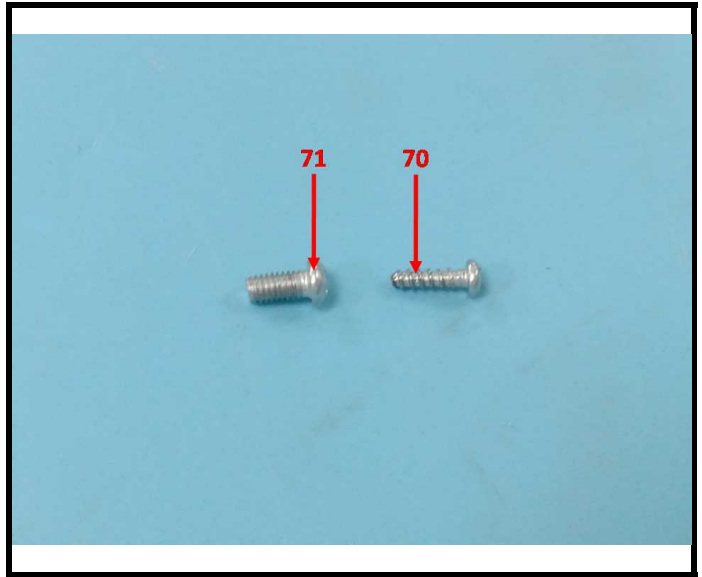


TEST REPORT

Report No.: SZ4221021-48483E

Date: December 14, 2022

Page 15 of 17

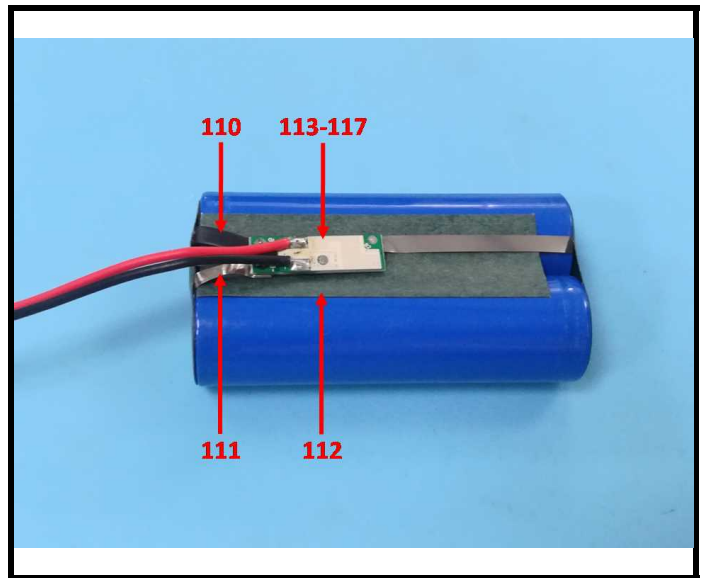
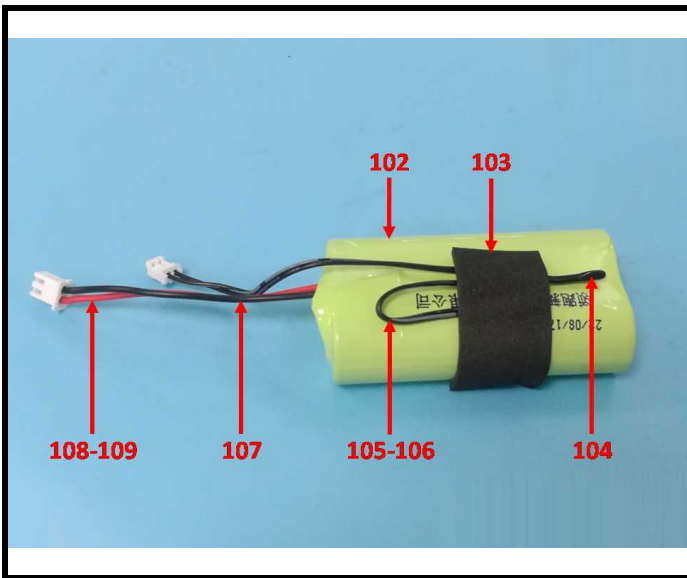
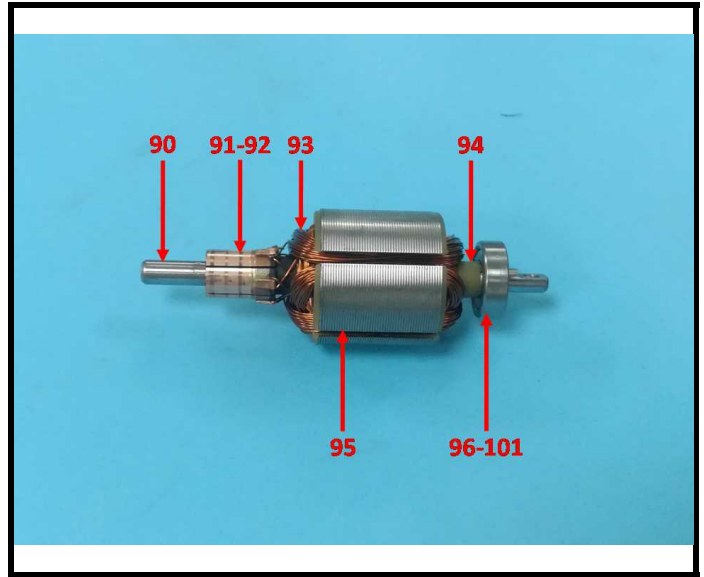
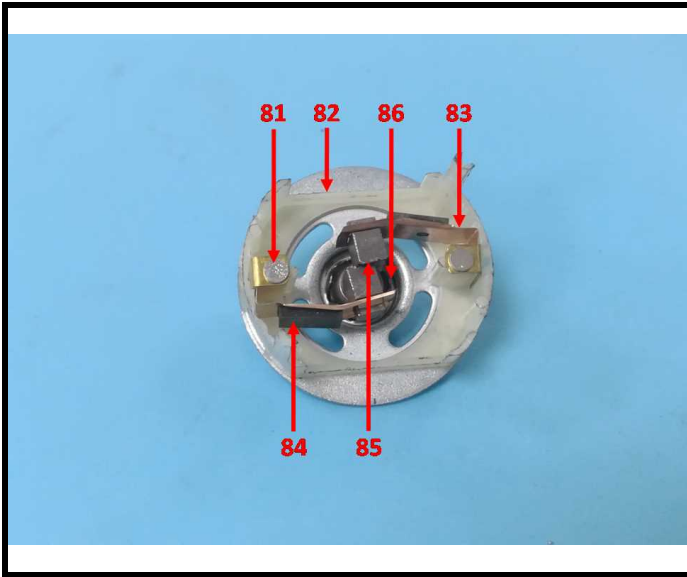


TEST REPORT

Report No.: SZ4221021-48483E

Date: December 14, 2022

Page 16 of 17



BACL authenticate the photo on original report only

TEST REPORT

Report No.: SZ4221021-48483E

Date: December 14, 2022

Page 17 of 17

Statement:

- 1.This report cannot be reproduced except in full, without prior written approval of the Company.
- 2.Unless otherwise stated the results shown in this test report refer only to the sample(s) tested and such sample(s) are retained for 30 days only.
- 3.This report is valid only with a valid digital signature. The digital signature may be available only under the Adobe software above version 7.0.
- 4.Otherwise required by the applicant or Product Regulations, Decision Rule in this report did not consider the uncertainty.
- 5.The information which provided by the applicant, such as sample description, sample name, material component, style/item No. , P.O. No. , manufacturer, age phase, the laboratory is not responsible for its authenticity and this information can affect the validity of the result in the test report.
- 6.The test samples were in good condition before testing.

*** End of Report ***